

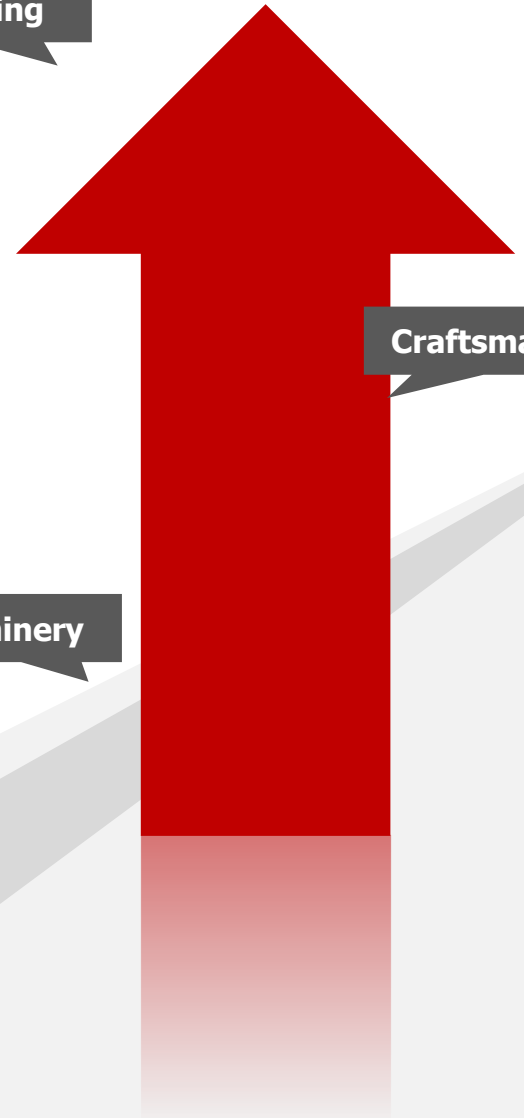
ECM Co., LTD.

ENGINEERING
CRAFTSMANSHIP
MACHINERY

Engineering

Craftsmanship

Machinery



OVERVIEW

ECM Co.. LTD.

- A. Over 11 years Experiences for Pharmaceutical, Nutrition, Cosmetic and Packaging Industry since 2004.**
- B. Provided over 40 countries since establishing.**
- C. Own plant and R&D lab**
- D. Most famous brand in the world market**
- E. Competitive production capacity**
- F. Customize production base**
- G. Own manufacturing plant (5-story building total 2,500sqm)**

PROFILE

10cases of patents on new Device

- New device
- Design Registration



CE certification and ISO 9001

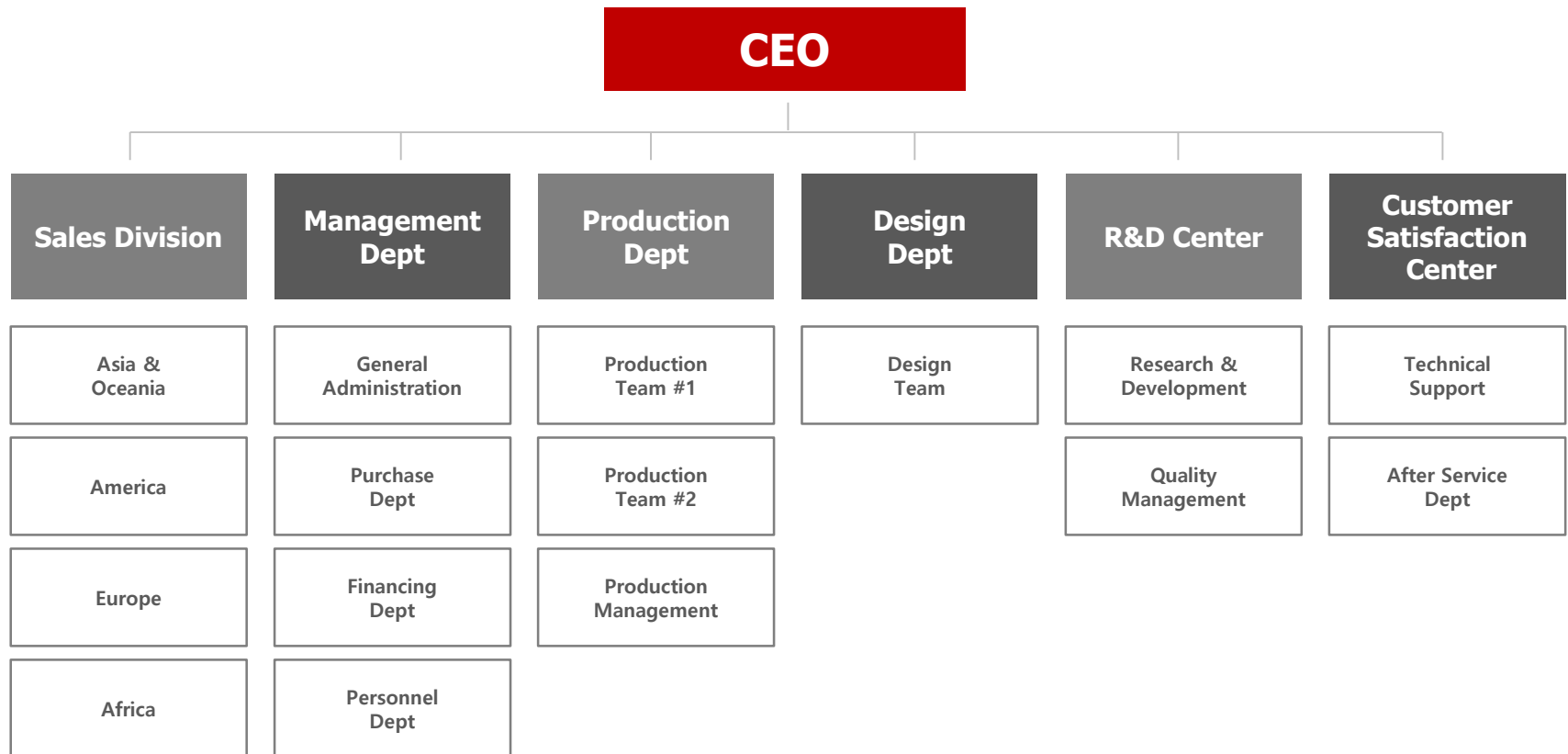


REFERENCES

Performed more than 400 projects worldwide!



ECM C/I (Corporate Identity)



ECM : Presentation

Presentation

1. Strong Point
2. Speed Chart
3. Saving cost
4. Conclusion



Strong Point

1. Reject first bottle to ensure counting accuracy when stop & re-start

2. Automatic tuning for sensing sensor

3. 12 or 24 channel product feeder with 3 step vibratory trays

4. Easy programming of recipes with 100 product memory

5. Hopper level monitoring sensor with alarm and visual lamp

Strong Point

6. Omron PLC and ProFace Touch screen control

7. All contact parts materials are made of SUS 316L

8. Perforated tray for chip & dust collection

9. Dust collecting tray and vacuum line underneath the tray

10. Sanitary double lane conveyor with container feeding control

Strong Point

11. Individually operating chute gating cylinders

12. High speed infrared sensor with 100% counting accuracy

13. Quick and simple change over and strip down without tool

14. Easy and speedy cleaning procedure

15. Adopted by GMP compliance

Strong Point

16. Worldwide network

17. Well counting for transparent Softgel capsule

18. Bottle dividing system

19. Reasonable price and strong after sales service

20. Customize production base

Speed chart

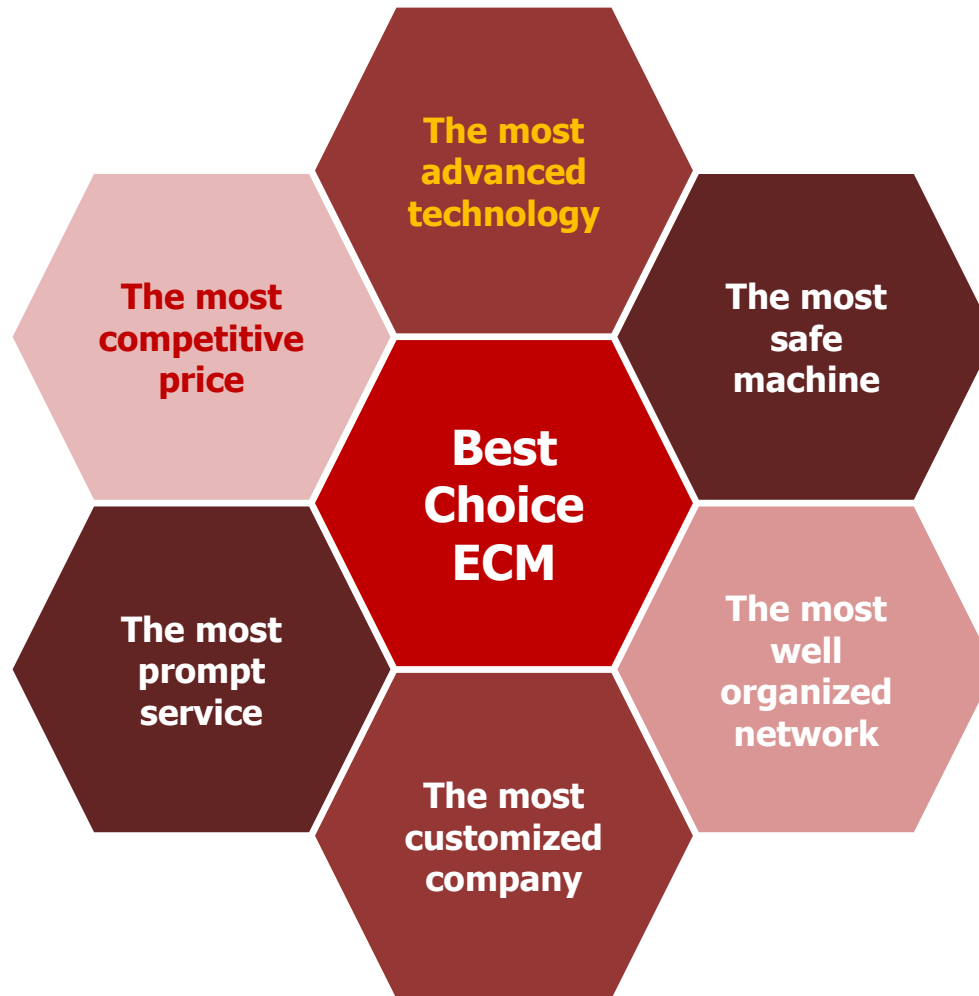
Product	Size	Count/Bottle	Bottle opening (dia.)	Speed/Min (60BPM)	Speed/Min (120BPM)
Soft Capsule	16 x 10mm	50	25mm	48 ~ 51	95 ~ 100
		100	25mm	45 ~ 48	90 ~ 95
		50	32mm	48 ~ 51	95 ~ 100
		100	32mm	45 ~ 48	90 ~ 95
Hard Capsule	16 x 5.5mm	50	32mm	50 ~ 53	100 ~ 105
		75	32mm	48 ~ 50	95 ~ 100
		100	32mm	45 ~ 48	90 ~ 95
Tablet (Round / uncoated)	6.5 x 3mm	50	32mm	50 ~ 53	100 ~ 105
		75	32mm	48 ~ 50	95 ~ 100
		100	32mm	45 ~ 48	90 ~ 95

Actual speed is subject to change by feeding condition,
bottle size and neck opening

Saving cost analysis

Description	Other Company	ECM	Difference	Saving Cost
Price of a plastic bottle US \$ 0.05				
Production Speed	84~96 bpm (70~80%)	96~108 bpm (80~90%)	12	US\$0.60
Hourly	90 bottles x 60 min = 5,400 bottles	102 bottles x 60 min = 6,120 bottles	720	US\$36.00
Daily (8hours)	5,400 bottles x 8 hours = 43,200 bottles	6,120 bottles x 8 hours = 48,960 bottles	5,760	US\$288.00
Monthly	43,200 bottles x 25days = 1,080,000 bottles	48,960 bottles x 25days = 1,224,000 bottles	144,000	US\$7,200.00
Yearly	1,080,000 bottles x 12 months = 12,960,000 bottles	1,224,000 bottles x 12 months = 14,680,000 bottles	1,728,000	US\$86,400.00

Conclusion



Thank you ECM

Specialized in complete bottling line manufacturer

